



WILIBOX CPU Board WBD-111

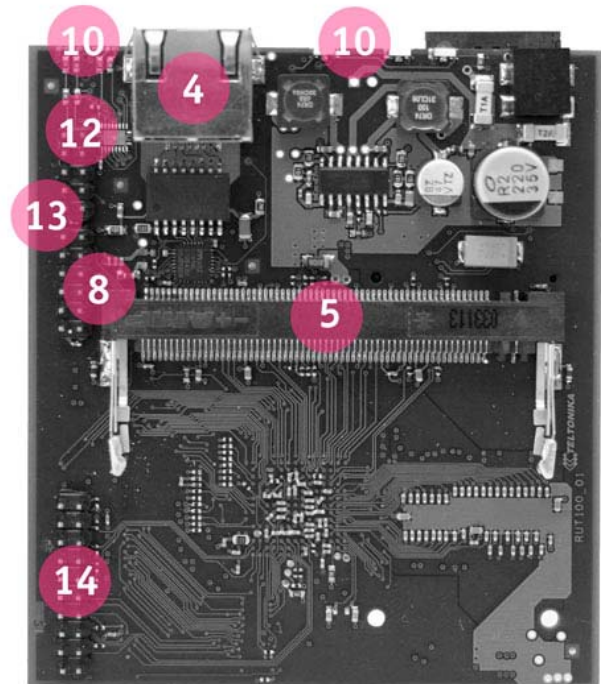
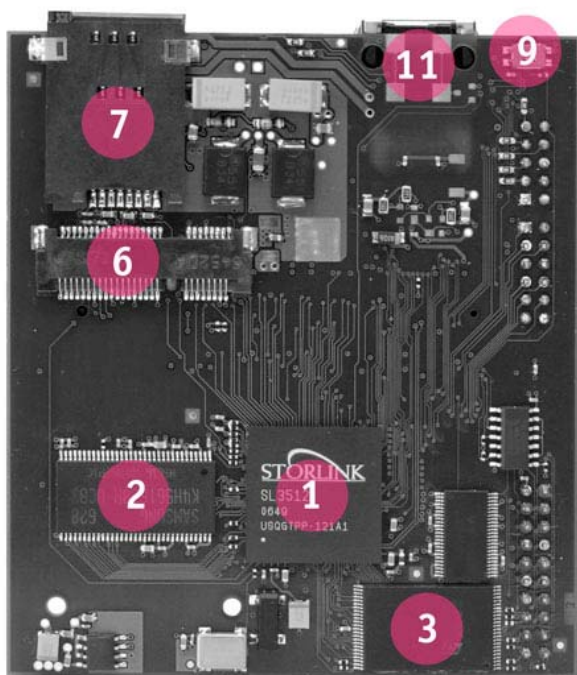
WILIBOARD WBD-111 CPU board is designed for a wide range of applications: WISP customer premise equipment, 3G routers, WiMAX customer premise equipment, point to multi point wireless bridges, wireless mesh repeaters, and 802.11 access points. PCI Express Mini Card connector brings possibility to use off the shelf HSDPA and EV-DO modules building 3G-Wi-Fi routers gateways and creates opportunity for out of band management for remote devices. The WBD-111 is powered by an innovative 400MIPS ARM920 RISC processor with separate embedded MMU and 8K/16K data/instruction cache. Additionally, the WBD-111 CPU board is designed for harsh outdoor environments with features such as integrated ESD protection, PoE for single cable installation, a wide operating temperature tolerance, and low power consumption. All of these features are combined into a single, compact package that is loaded with the latest expansion technologies to accommodate future hardware needs, making it one of the best CPU boards on the market.



CPU board fits the standard aluminum profile 86mm enclosure



WILIBOX CPU Board WBD-111



1. 300MHz ARM920 CPU
2. 32 Mbytes DDR RAM
3. 8 Mbytes Flash
4. 10/100 Base-TX Ethernet Port, ESD rated at 6 kV
5. Type III Mini-PCI socket, 3.3V up to 5W power
6. PCI Express Mini Card 3.3V (optional)
7. SIM card reader (optional)
8. GPIO pins on jumper
9. Software reset button
10. Programmable LED's
11. Speaker (optional)
12. TTL level serial port
13. Jumpers for external LED's and reset button (optional)
14. JTAG connector (optional)

Specifications (preliminary)

Electrical 12-20 VDC, 150 mA typical at 12 VDC

Mechanical 90mm X 81 mm X 18 mm 100 g